

Replacing Cartridge Holder ***draft***



PLEASE REMOVE BATTERIES AND INK CARTRIDGE BEFORE ATTEMPTING THESE REPAIR PROCEDURES. ALL REPAIR ARE DONE AT YOUR OWN RISK. THESE INSTRUCTIONS ARE A GENERAL GUIDE ONLY.

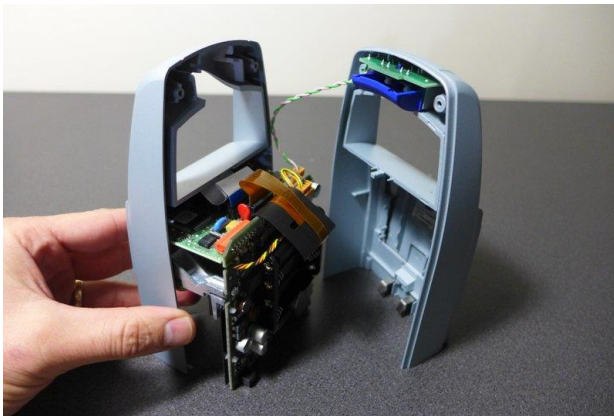
- A.** Use a torx 6 bit to remove the bottom plate (do not lose the small black screws!).



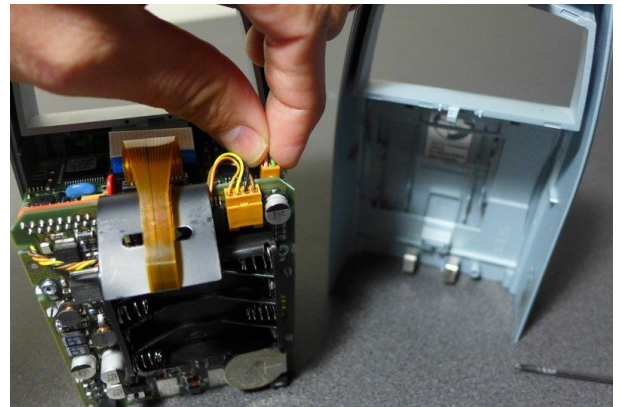
- B.** Use a P1 phillips head to remove the top handle screws.



- C.** You can now separate the unit



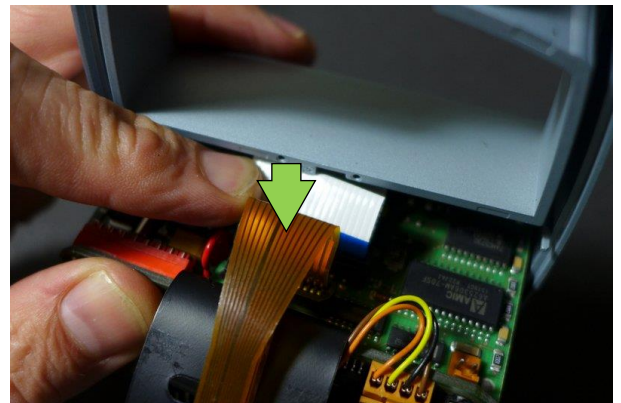
- D.** Remove the trigger connection and remove the back panel.



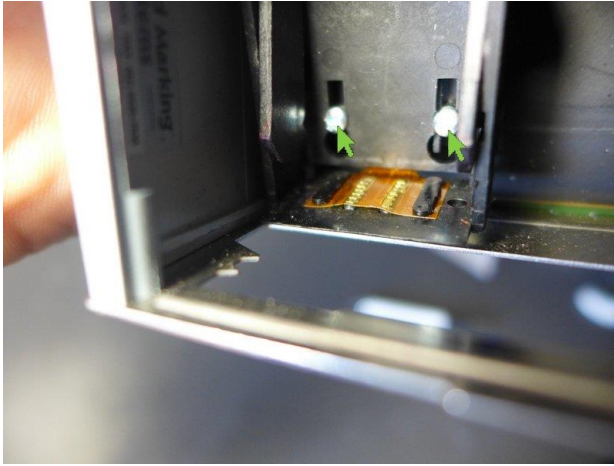
- E.** Remove the white ribbon cable and remove the front panel.



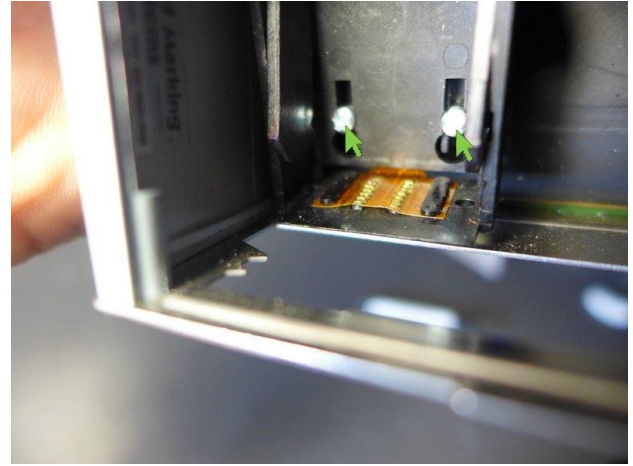
- F.** Pull out the cartridge holder ribbon and remove the adhesive.



- G.** Loosen the screws holding the cartridge holder in place and slide the cartridge holder out.

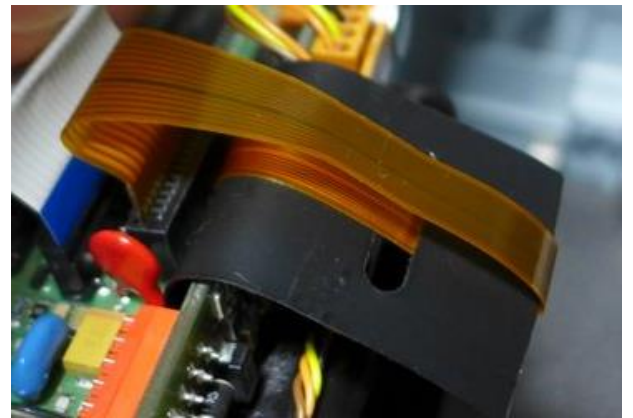


- H.** Insert the new cartridge holder assembly. Lightly tighten the screws.



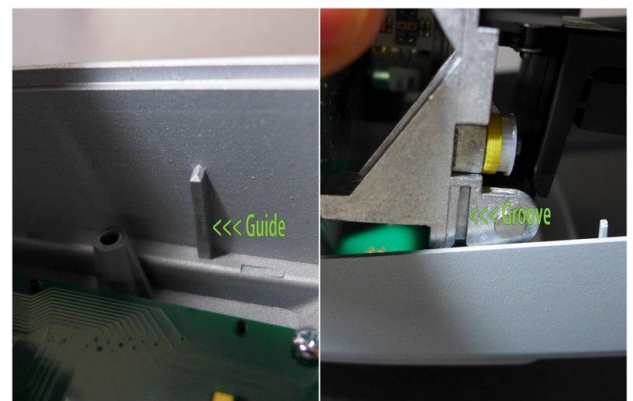
- I.** Slide the end of the ribbon through the board, following the path of the previously removed ribbon.

- J.** Insert the cartridge holder ribbon and attach with the foam adhesive.

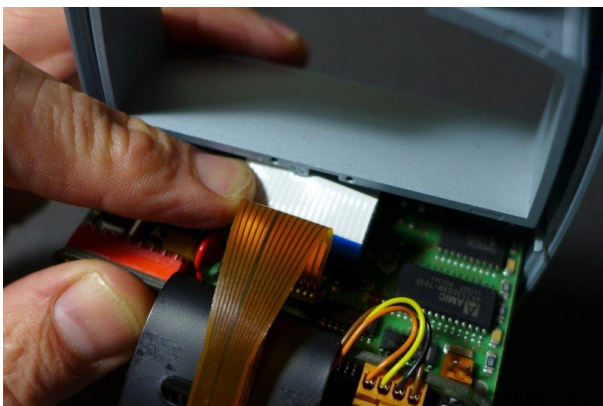


- K.** Reassemble the printer. by plugging the white ribbon in place.

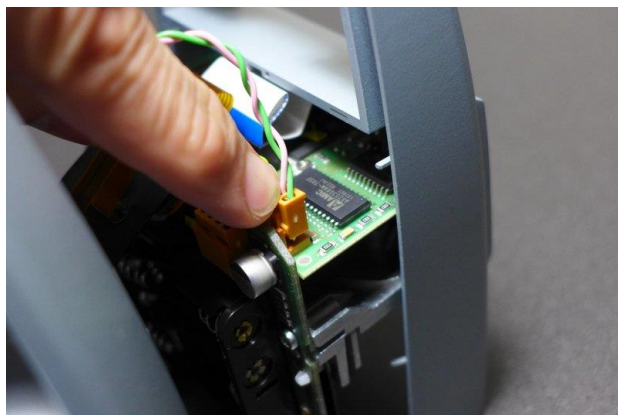
- L.** The "guts" of the printer have a slot on the metal body matching a groove on the casing.



- M.** The white ribbon needs to be "folded" under the casing



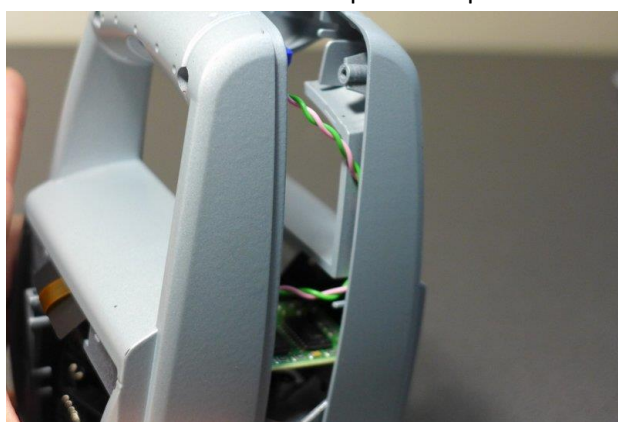
- N.** Attach the back casing... first plug in the trigger cable.



- O.** Before putting the back casing fully on, make sure the black "ribbon" goes through the slot. The ribbon ends up overhanging the battery compartment a bit, this is normal.



- P.** Make sure the trigger cable is tucked into the handle & around the screw hole. It should not be pinched as you close the back casing. You may have to use a screwdriver to poke it in place.



- Q.** The casing should line up neatly. You may need to poke the white ribbon into place.



- R.** Attach the handle screws first.



S. Place the base plate onto the frame. The 3 circuit board tabs need to fit into the matching slots. It is easier to locate these into the metal slots first, the push it forward so that the holes in the casing line up. Fasten with the torx T6 screws.



T. Insert a cartridge and check that the height of the cartridge is correct and does not protrude past the base plate. Adjust if needed and once satisfied with the position, carefully tighten the cartridge holder screws

